

CA Storage Resource Manager r11.7 SP1

CA Storage Resource Manager (CA SRM) is a cross-platform data storage management solution that monitors, analyzes, reports, schedules and automates networked storage resources across distributed and mainframe environments. It provides standards-based, centralized management of storage-intensive systems and applications such as backup and restore, messaging and databases to help improve data availability, overall productivity and efficiency.

Business Value

CA SRM simplifies and automates the management of storage in multi-vendor, multi-platform heterogeneous storage environments and gives the user a unified view of all storage deployed locally or distributed from a central control point. It also provides a common foundation and integrated modular applications that process storage management functions, and manage disk space, storage network resources, and 3rd-party storage management applications.

Product Overview

As organizations are experiencing exponential growth in their quantities of data to manage, particularly business activities on the Internet, storage-related demands far outpace the supply of capable solutions and resources available. CA SRM automates the management of storage in multi-vendor, multi-platform environments, providing users with a unified view of all storage deployed locally or distributed from a central point of control.

Delivery Approach

CA SRM helps to bridge the business and technical gaps between mainframe and distributed teams within an IT organization as the need for them to work in tandem continually becomes more critical. You can obtain a consistent, global view of enterprise-wide storage capacity, allocation and usage for effective management of business-critical data as well as a variety of additional important aspects of data storage.

What's New, What's Compelling?

CA Storage Resource Manager r11.7 SP1

Enhancements to CA SRM r11.7 SP1 include:

WEB REPORTER This new user interface simplifies the collection and reporting of enterprise-level data from multiple SRM Servers, enabling you to quickly view data and make informed decisions regarding your IT environment. CA SRM Web Reporter contains a set of predefined reports, and also allows you to create custom reports using the SAP® Business Objects™ (BO) report creation and customization interfaces.

HOST AND STORAGE VIRTUALIZATION SUPPORT CA SRM provides detailed capacity reporting of host virtualization environments so users can make knowledgeable decisions about how to manage their storage infrastructure. Additionally it automatically collects detailed capacity-related information through the complex layers of storage virtualization.

CA ARCSERVE R12 SUPPORT Provides monitoring, analysis and reporting of the new CA ARCserve multi-tiered architecture.

MULTIPATH I/O SUPPORT You can easily identify which path is used by applications and the status of the different paths available in your storage environment.

Features

CA SRM includes the following features:

EFFECTIVE STORAGE UTILIZATION CA SRM provides unprecedented value through the advanced discovery, tracking, analysis and optimization of a company's storage resources. Companies can postpone or reduce the purchase rate of new storage capacity by identifying under-utilized volume or effectively consolidating existing storage hardware.

ANALYSIS OF DATA AND STORAGE USAGE CA SRM provides comprehensive storage capacity and utilization analysis. Data usage analysis provides users in-depth insight into capacity usage, helping you optimize storage capacity utilization across the entire storage infrastructure.

STORAGE NETWORK HEALTH Improve storage efficiency by obtaining comprehensive views from disk platters up to file and application levels. You can assess risks associated with data by mapping the weakest point in the data path.

FULL DATA PATH ANALYSIS CA SRM delivers a robust data path and storage utilization analysis to identify and assess risks to the integrity and quality of data.

MANAGE STORAGE FROM DESKTOP TO MAINFRAME Obtain a consolidated, bird's-eye view of enterprise storage assets, including Direct-Attached Storage (DAS), NAS and SAN and the mainframe in a single console, for more effective management.

GLOBAL MANAGEMENT, VIEWING AND NAVIGATION Global resources across various distributed networks can all be managed via a single consolidated management console. Defined storage services and policies can be applied across managed networks.

POLICY-BASED PROBLEM REMEDIATION CA SRM provides comprehensive policy-based problem remediation and support for best practice management of storage resources. Actions invoked by capacity threshold and exception-based events can be used to optimize efficiency of storage devices and applications and help maintain data availability and continuity across business processes.

THRESHOLD-BASED OR EVENT-ORIENTED AUTOMATION Resource conditions are automatically monitored and the appropriate actions can be triggered to comply with user-defined policies.

CENTRALIZED MANAGEMENT OF BACKUP OPERATIONS CA SRM provides centralized reporting of multiple backup and recovery tools to optimize day-to-day data protection operations, helping to reduce labor costs and staffing needs.

REPORTING AND MONITORING OF MULTI-VENDOR BACKUP AND RECOVERY CA SRM provides comprehensive monitoring and reporting of backup operations and media for cross-platform, multi-vendor backup and recovery solutions, including CA ARCserve®, IBM Tivoli® Storage Manager, EMC NetWorker® and SYMANTEC NetBackup™. The CA SRM backup resource management capabilities help protect data based on the application of specified criteria rather than being schedule-based. This further helps optimize the ever-shrinking backup window.

DATA CLASSIFICATION Data objects can be logically grouped by attributes such as file size/type/age or other criteria so that data can be profiled for the management of its life cycle. This unique feature facilitates policy-based management and storage chargeback.

COMPREHENSIVE BUILT-IN REPORTING “Out-of-the-box” reports provide in-depth information on every aspect of the storage environment, including domains, servers, volumes, files and owners. Users can customize queries for ad-hoc needs. New usability enhancements include a dynamic reporter that enables batch-mode email alerting generation through integrated SMTP email facility and built-in capability to convert reports into PDF or Excel format.

STORAGE CHARGEBACK Users can leverage enterprise-scale storage chargeback capabilities of the CA Service Accounting to measure and manage storage usage by organizational users and departments. Storage consumption metrics for different users and user groups can be quantified for metering, accounting, billing by different rate plans, and invoicing for effective cost-planning purposes. Storage costs can be allocated by user, department or line of business to influence and manage behaviors.

CENTRALIZED MANAGEMENT OF STORAGE-INTENSIVE APPLICATIONS CA SRM provides a single, global management console for administering storage-intensive applications.

- **Data Availability Management** Support for CA's ARCserve Backup provides centralized reporting, monitoring and CA SRM-driven backup.
- **Customized Views and Reports** CA SRM allows for customized and consolidated viewing and reporting of multiple backup and recovery products including monitoring of backup server performance, graphing trends, validation of backup tasks and real-time scanning of backup logs for identification and root-cause analyses of backup events.

DATABASE RESOURCE MANAGEMENT Centralized storage analysis and planning functions help users manage the future growth and performance of Microsoft® SQL Server, Oracle®, Sybase® and DB2® databases. This capability enables summary report generation, space monitoring, trend analysis and automatic alerts when an instance is down or running low on storage space, or over-allocation of space to databases has occurred. Summary report coverage includes database instances, table spaces, data files, segments, and extents.

MESSAGING AND COLLABORATION RESOURCE MANAGEMENT Support provides centralized reporting, analysis, management and planning functions for Microsoft® Exchange and Lotus® Domino™ servers and mailboxes. Users can improve performance and better plan for messaging application and user growth.

NAS SUPPORT FOR NETWORK APPLIANCE, WINDOWS-POWERED NAS OR LINUX-BASED FILERS. Support includes automatic discovery, centralized monitoring and management of multiple filers.

CLUSTER SERVER SUPPORT CA SRM provides support for managed servers configured in clustered environments using Microsoft® Cluster Server.

SECURE APPLICATIONS AND STORAGE ASSETS CA SRM can perform a variety of discovery, trending and analysis of business applications and their related storage assets in a non-disruptive manner.

SECURE COMMUNICATIONS Integrated Secure Shell (SSH) and Remote Shell (RSH) -based communication replaces UNIX/Telnet communication in remote UNIX agent install and monitoring of NetApp filers.

SMART AGENT TECHNOLOGY Smart Agents provide distributed and parallel processing and policy-defined asynchronous and synchronous modes of data collection and file query. Data is collected at predefined or near real-time schedules when connected to CA SRM server (synchronous) or collected and stored remotely when disconnected (asynchronous) as in the case of networking problems, based on policies created. Data is subsequently transmitted back when connection is reestablished.

STORAGE RAID ARRAY SUPPORT Redundant Array Inexpensive Disks (RAID) array support provides storage consumption, availability and allocation metrics on disk arrays through support for SNIA's industry standard-based SMI-S providers and/or the vendor APIs.

CENTRALIZED STORAGE MANAGEMENT

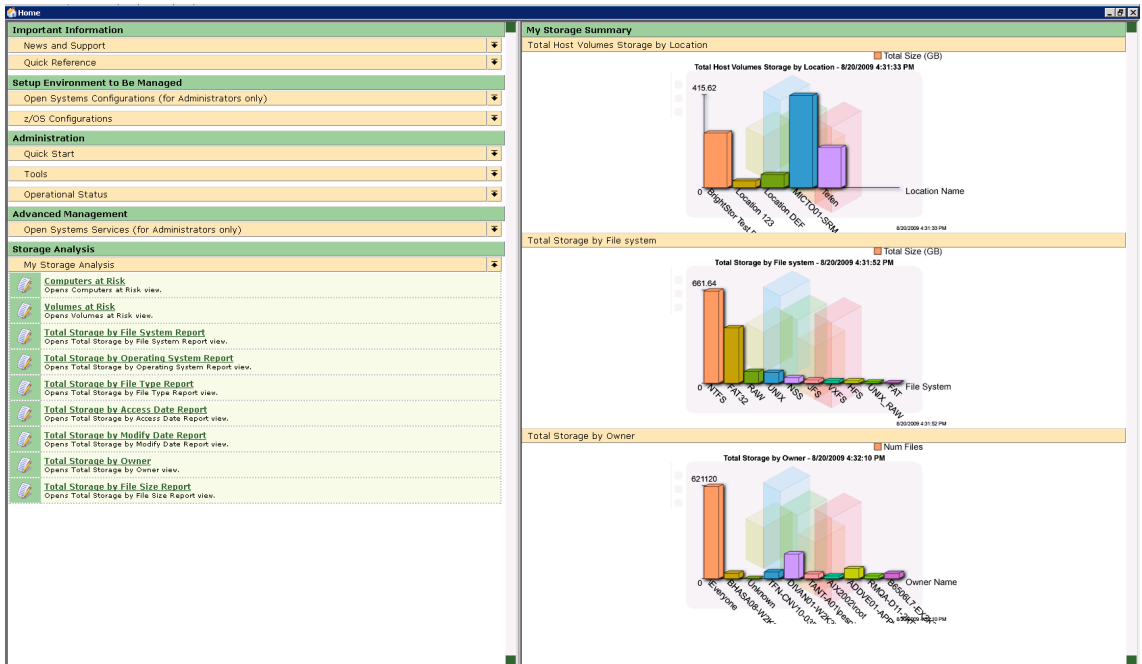


FIGURE A: An intuitive, customizable user interface facilitates ease-of-use and an enhanced user experience to help improve it staff productivity, enable smooth and rapid deployment of key storage assets and empower it staff to better leverage each storage asset.

Executive Dashboard

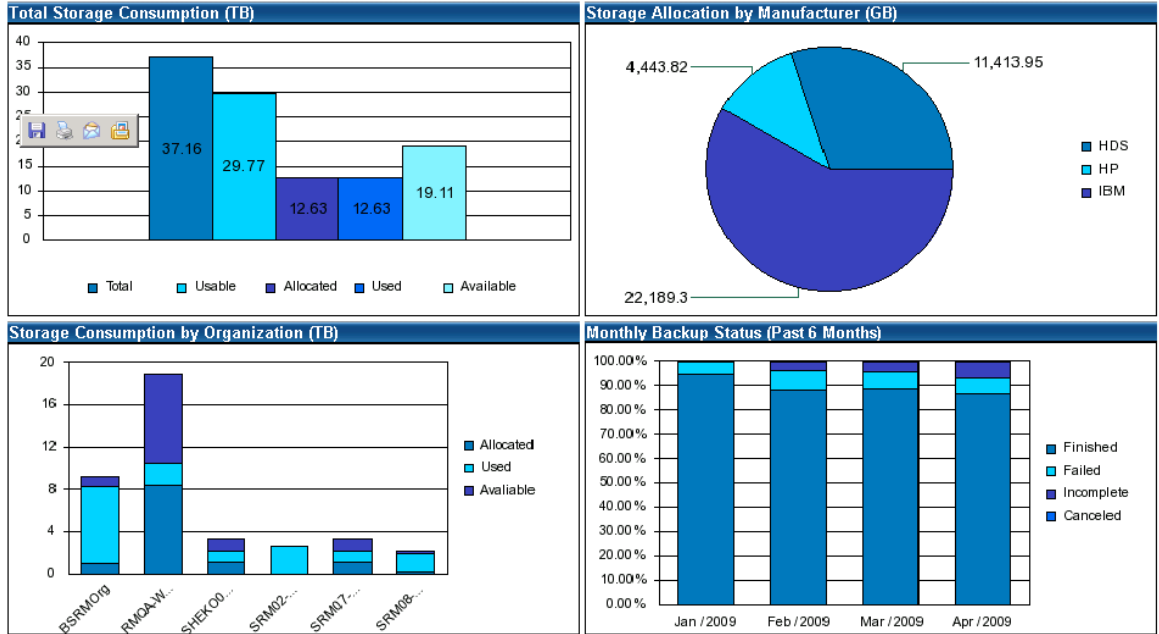


FIGURE B: Utilize 'web reporter' to facilitate report creation and distribution.

Benefits

With CA SRM, you can evolve your IT storage operations from being reactive and focused only on technology to being flexible, adaptable and focused on serving the business. This helps you better manage risk, reduce costs, and improve service, enabling IT to meet the business needs of your enterprise.

Why CA

A key component of CA's Enterprise IT Management (EITM) vision, CA SRM expands on CA's 30+ years of leadership to help customers unify IT and simplify the management of today's complex computing environments for greater business results. EITM is a dynamic approach that integrates and automates the management of information technology applications, databases, networks, security, storage and systems across departments and disciplines to help recognize the full potential of each.

Copyright © 2009 CA. All rights reserved. IBM, DB2 and Tivoli are trademarks of International Business Machines Corporation in the United States, other countries, or both. All trademarks, trade names, service marks and logos referenced herein belong to their respective companies. This document is for your informational purposes only. CA assumes no responsibility for the accuracy or completeness of the information. To the extent permitted by applicable law, CA provides this document "as is" without warranty of any kind, including, without limitation, any implied warranties of merchantability, fitness for a particular purpose, or noninfringement. In no event will CA be liable for any loss or damage, direct or indirect, from the use of this document, including, without limitation, lost profits, business interruption, goodwill or lost data, even if CA is expressly advised in advance of the possibility of such damages.

