

CA NetMaster® Network Management for TCP/IP r11.6 SP1

CA NETMASTER® NETWORK MANAGEMENT FOR TCP/IP (CA NETMASTER FOR TCP/IP) HELPS YOU SHIFT TO PROACTIVE MANAGEMENT FOR YOUR MAINFRAME IP APPLICATIONS. IT FACILITATES HIGH AVAILABILITY AND PERFORMANCE FOR TCP/IP-ENABLED MAINFRAME APPLICATIONS THROUGH PROACTIVE MANAGEMENT OF YOUR NETWORK INFRASTRUCTURE, DEVICES, EVENTS AND CONNECTIONS.

Overview

Proactive network management means anticipating and correcting issues before they become problems for your business users. CA NetMaster helps you meet or beat service levels, maintain high availability and improve user experience in a cost-effective manner. This time-proven solution minimizes outages while maximizing performance.

Benefits

CA NetMaster helps you achieve reliable connectivity to your network by monitoring network health, tuning network performance and quickly diagnosing and fixing network issues. This solution fulfills your requirement for simpler, more automated tools that assist network experts in solving problems quickly, proactively anticipating problems, and planning for future demands.

The CA Advantage

CA NetMaster integrates with other CA network solutions to offer a complete view of the mainframe network that you manage. It delivers real-time, actionable network information that is readily accessible by both network administrators and performance analysts. CA NetMaster is an integral part of CA's Enterprise IT Management (EITM) initiative, which is to help you unify IT and simplify the management of complex computing environments across your entire organization for better business results.

CA NetMaster Network Management for TCP/IP Proactively Manages Your Mainframe-based IP Network

An available, reliable mainframe network is essential to your business success. Many business-critical applications are still running on the mainframe, and there are even more accessing the mainframe through distributed channels. With fewer mainframe experts available to manage your network, your business needs a tool that assures peak performance and high availability. Even more so, you need a tool that simplifies the effort. CA NetMaster automates data collection and consolidation, presenting your systems programmers with the actionable metrics they need, in real time.

Key Capabilities

COMPREHENSIVE PERFORMANCE MANAGEMENT — MANAGING YOUR SERVICE LEVELS CA NetMaster effectively measures the performance of your network by gathering key performance metrics for a wide array of network resources.

- **Real-time Performance Analysis** Detailed statistics are collected for all monitored resources, including IP stacks, Communication Storage Manager (CSM), network devices, address spaces and other critical IP nodes. Performance metrics are gathered from a variety of sources including through our advanced packet monitoring capabilities.
- **Historical Performance Reporting** Comprehensive network performance reports can be scheduled or generated on-demand for all monitored systems and network components. These reports can greatly assist in understanding the underlying characteristics of your network activity and how best to provision for its future growth.

FLEXIBLE MONITORING CAPABILITIES CA NetMaster allows you to monitor network health and increase problem resolution efficiency through the Web- or 3270-based interfaces. Several monitoring functions are provided that assist in clearly highlighting current network activity and issues.

- **IP Summary Display** The IP Summary display provides a status-at-a-glance overview of current network activity. The IP Summary enables easy identification of active stacks, interfaces, ports and remote networks. In addition, it provides drill-down capabilities to diagnose specific connections and measure network performance in real time.
- **IP Condition Summary** The IP Condition Summary is a dashboard-like display that provides out-of-the-box monitoring and threshold alerting for key performance metrics. The IP Condition Summary also provides expert advice when exceptions occur.
- **IP Resource Monitor** The IP Resource Monitor supports the display of all monitored resources, providing generic command support to simplify problem investigation.
- **IP Node Monitor** The IP Node Monitor identifies potential device problems by checking device status on a site-specified polling rate, monitoring device attributes and generating alerts based on requested thresholds.

- **Alert Monitor** The Alert Monitor highlights significant network events and supports the filtering and forwarding of events to other applications and platforms. Alerts are color-coded to represent their assigned severity.

EXTENSIVE NETWORK DIAGNOSTICS — ASSISTING TIMELY PROBLEM RESOLUTION CA NetMaster provides diagnostic functions and device-specific support to assist in problem diagnosis.

- **SmartTrace** SmartTrace is a real-time tracing function that supports the timely tracing of network connections. Multiple traces can be run simultaneously with varying criteria and trace definitions can be created and saved for future use. Traces can be initiated by operators from the various monitors or triggered by automation. Trace results can be viewed immediately or saved for later viewing.
- **Device Support** Specific device support is provided for Open Systems Adapter (OSA), CISCO Router Channel Interface Processor (CIP) and Enterprise Extender management. Additionally, MIBinsight provides data gathering from any MIB-II-compliant device.
- **NETSTAT Command Menu** A front-end to commonly used NETSTAT commands has been provided. This will simplify the issuing of NETSTAT commands thus saving the user from remembering syntax and parameters of many commonly used commands.

SIMPLIFIED MONITORING AND CONTROL — EASING PEOPLE RESOURCE CONSTRAINTS Intuitive, web-based graphical user interfaces (GUIs) help to reduce the learning curve associated with using a mainframe management product. Personnel with limited mainframe or network knowledge can manage day-to-day operations with minimal training.

- **WebCenter** Supports Web browser-based access to all monitoring and diagnostic functions. Typical PC functions, such as drop-down lists, navigation bars, and use of multiple windows are exploited to simplify operation.
- **WebCenter Software Development Kit (SDK)** This SDK allows for the simplified creation of custom Web pages and Web content for inclusion in the WebCenter interface.
- **ReportCenter** ReportCenter provides Web browser-based access to the CA NetMaster comprehensive historical performance data. This assists in the timely delivery and increased accessibility of network reports to relevant network personnel.

EXPRESS SETUP CAPABILITIES — TCO AND ROI CA NetMaster reduces the amount of manual effort involved in customizing and defining network operational policy through self-management features. This is important in enabling a quicker return on investment and in reducing the total cost of ownership of your network management system.

- **Network Discovery** CA NetMaster discovers network resources based on user-specified criteria and automatically defines these resources to the network knowledge base using predefined monitoring templates.
- **Baseline Monitoring** This feature enhances network monitoring intelligence to learn normal network operation and usage patterns. Once the network baseline is established, thresholds can be defined to proactively alert when deviations occur.

- **Code-free Automation** Menu selections and fill-in templates are provided to define when and how resources are monitored and managed. Desired state resource automation utilizes exception criteria, such as performance and utilization thresholds, to trigger automated actions.
- **Customizer** This feature simplifies setup by defining and updating all customizable parameters using full-screen, field-validated menus.
- **zIIP Exploitation** Much of the processing that occurs on the NetMaster region is now zIIP-eligible. For organizations with this specialty engine, this can offer significant cost savings by allowing CA NetMaster processing to be offloaded onto the zIIP.

What's New in r11.6 SP1 — Enterprise Extender Edition

The new release is called the Enterprise Extender (EE) Edition because it focuses on adding support for Enterprise Extender and APPN/HPR metrics, management and analysis.

EE CONDITION SUMMARY The IP Condition Summary has been enhanced to include EE metrics. This provides a status-at-a-glance comparison of EE performance against a fixed set of EE exception indicators, making it possible to easily identify potential problems.

EE SMARTTRACE TOOLSET SmartTrace has been enhanced to provide centralized tracing for EE packets. Tracing can be initiated for a remote CP, UDP connection, RTP pipe, VIPA or UDP port.

ENHANCED EE PERFORMANCE MONITORING EE performance monitoring has been extended to include monitoring by partner CP, monitoring by local VIPA, retransmission rates and percentages, and EE traffic as a percentage of total output and input.

RTP HEALTH CHECK The RTP Health Check identifies HPR pipes in an abnormal condition.

EE TRAFFIC EXPLORER To identify overhead versus payload and to pinpoint performance issues with inefficient or slow EE connections, the EE Traffic Explorer provides a detailed breakdown of all components.

EE CONNECTIVITY TEST The EE Connectivity Test checks the EE infrastructure and network connections for an active EE connection or for an arbitrary IP host.

RTP RED EVENT DETECTION The RTPRED5M IP event detector detects when an RTP Pipe has ARB mode = RED (severe traffic congestion) for two consecutive five-minute samples.

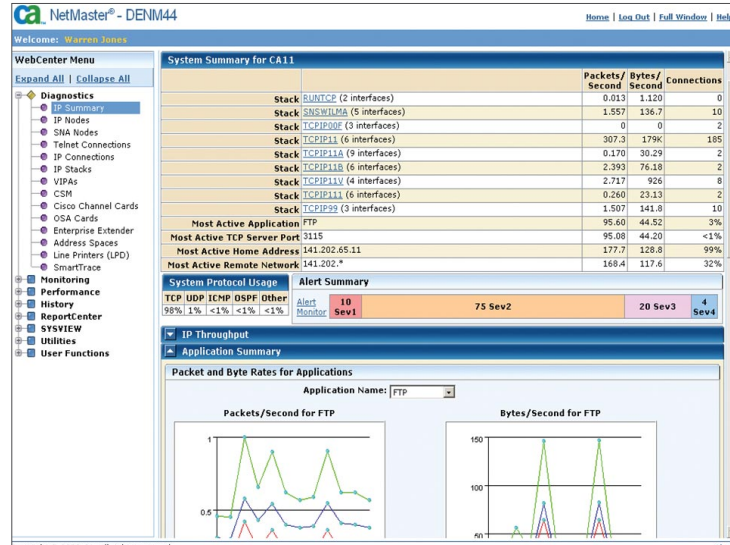
APPN/HPR RESOURCE An APPN/HPR resource class is provided to allow for the monitoring of RTP pipes and their associated status.

VTAM COMMAND LIST The VTAM Command List displays the commands relevant to EE, RTPs and APPN networking. It provides functions that are not available from line-mode VTAM SPO consoles, such as scrolling, find, command recall, and printing.

FIGURE A

An IP Summary Display Highlights All the Features Available in WebCenter.

WEBCENTER MAKES IT EASIER TO ANALYZE YOUR NETWORK



CA NetMaster Network Management for TCP/IP Supports Service Level and Availability Management

The increase in cross-platform applications, the move from SNA to IP and the extension of the user community to the Web has resulted in increasing focus on network performance and resilience. This complexity translates to a requirement for simpler, more automated tools that assist network experts in solving problems quickly, proactively anticipating problems and planning for future demands. CA NetMaster addresses these requirements with a feature-rich solution designed to support your growing network.

Network administrators, operators and systems programmers will find the product easy-to-use and the well-designed interface a key support for their many network management activities. Whether they are tracing down a performance problem, analyzing history to anticipate future concerns, or planning for growth and change, CA NetMaster brings them the information they need to rapidly and cost-effectively manage their mainframe network.

CA NetMaster Network Management at a Glance

PRODUCT	FUNCTION	FEATURES	BENEFITS
CA NetMaster Network Management for TCP/IP	Comprehensive management of mainframe-hosted IP applications. This product gives you immediate value by helping you manage the performance and availability levels that your business requires.	<ul style="list-style-type: none">• Real-time performance analysis• Historical performance analysis• Dynamic IP packet tracing• WebCenter graphical interface• Feature-rich with actionable metrics	<ul style="list-style-type: none">• Faster problem resolution and increased availability• Predict future problems and manage proactively• Efficient and effective management• All the network management tools you need

The CA Advantage

CA offers you the kind of comprehensive and integrated Network Management tools that you have been looking for. Networks are becoming more complex and more mission-critical — you need automation and integration that support the business initiatives now and into the future. With deep knowledge of mainframe networks and a clear understanding of the business challenges you face, CA designed the CA NetMaster product family to meet and exceed those requirements. These straightforward products allow you to reap immediate value from your investment. With easy set-up and customization, and the purpose-built design of the WebCenter, achieving measurable service level improvements with limited people resources is possible. The CA NetMaster product family offers you a complete mainframe solution; integration with CA NSM takes it to the enterprise level.

CA NetMaster is an integral part of CA's Enterprise IT Management (EITM) initiative. The goal of EITM is to help you to unify IT and simplify the deployment, use and integration of all your complex management solutions, tasks and processes to help ensure that your business is fully supported.

Next Steps

With industry-leading features and capabilities, CA NetMaster helps you succeed as a network administrator. CA NetMaster gives you all the features you need in a network management product. These include real-time and historical performance analysis, low overhead and full-featured problem analysis tools (like SmartTrace) and automation designed to support your agile business. Best of all, no matter what combination of CA NetMaster products you select, you have a fully integrated network capability available in either the mainframe green screen or a web-based GUI.

To learn more and see how CA software solutions enable organizations to unify IT and simplify the management of complex computing environments for better business results, visit ca.com/mainframe/network.