

CA ESP Workload Automation System Agent for IBM i5/OS

CA ESP WORKLOAD AUTOMATION SYSTEM AGENT FOR IBM i5/OS (CA ESP WA SYSTEM AGENT FOR IBM i5/OS) HELPS YOU INTEGRATE YOUR SYSTEMS AND APPLICATIONS ACROSS THE ENTERPRISE SO YOU CAN CENTRALIZE CONTROL OF WORKLOAD MANAGEMENT. IT EXTENDS THE FULL SCHEDULING MANAGER CAPABILITIES OF CA WORKLOAD AUTOMATION (FORMERLY CA dSERIES WORKLOAD AUTOMATION) AND CA ESP WORKLOAD AUTOMATION (CA ESP WA) TO THE IBM i5/OS OPERATING SYSTEM.

Overview

CA ESP WA System Agent for IBM i5/OS allows your organization to integrate your systems and applications workload running on the IBM i5/OS platform with the balance of your enterprise workload. By leveraging the scheduling manager capabilities, you can centralize cross-platform scheduling and management functions.

Benefits

The CA ESP WA System Agent for IBM i5/OS eliminates the requirement to administer processes in silos by using manual procedures, scripting, and platform specific scheduling tools. This results in simplified IT management and significant cost savings.

The CA Advantage

CA is transforming its industry recognized leadership in job scheduling into next generation workload automation tools. CA ESP WA System Agent technology is part of CA's vision for Enterprise IT Management (EITM), which is to help unify IT and simplify the management of complex computing environments across the enterprise for better business results.

CA ESP WA System Agent for IBM i5/OS Helps You Centralize Control of Workload Management

Companies require an efficient IT infrastructure to support business-critical applications and service level agreements. However, many organizations are inundated with platform specific scheduling tools that lack the integration capabilities necessary to combine with the balance of their system and applications infrastructure. Without a common scheduling environment, the cost and administrative burden of managing workload in silos increases exponentially as the data center expands. As a result, organizations face increasing pressure to standardize on system management tools that can be leveraged across the entire IT infrastructure.

CA ESP WA System Agent technology integrates systems and applications across the enterprise to facilitate centralized control of workload management. CA ESP WA System Agents eliminate the requirement to manage processes in silos using manual procedures, scripting and platform specific scheduling tools. In conjunction with the CA scheduling manager you can define, schedule, monitor and manage cross-platform workload from a single point of control. With CA ESP WA System Agent for IBM i5/OS, your organization can lower operating costs, improve productivity and gain end-to-end visibility of business processes. The end result gives you added capacity to develop and support your core business initiatives.

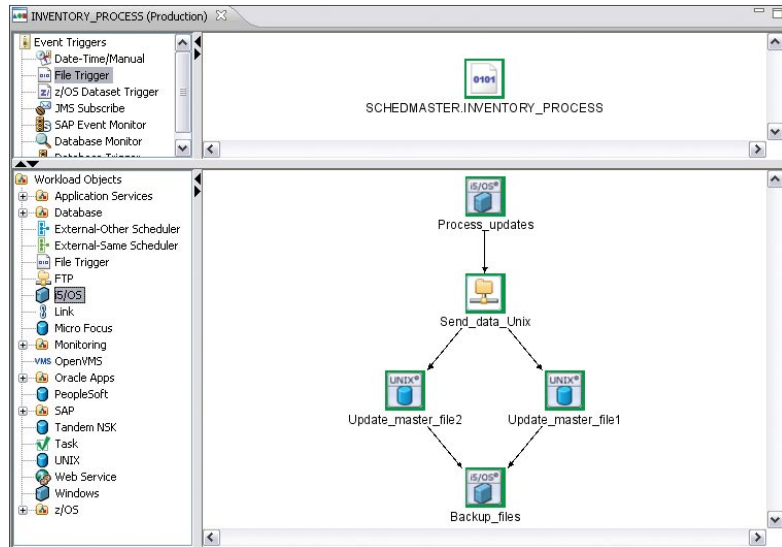
LEVERAGING THE SCHEDULING MANAGER The CA ESP WA System Agent for IBM i5/OS is one component of a complete Workload Automation solution. Users are able to leverage the capabilities of the scheduling manager for all workload automation requirements, such as eliminating manual processes, replacing embedded OS and ERP scheduling tools, and utilizing the richest array of event triggers and workload object types available. With CA ESP WA System Agent technology, you can extend many of the powerful capabilities of workload automation to your IBM i5/OS environment. This includes:

CROSS-PLATFORM MANAGEMENT As a single, integrated solution, you can execute workload across all leading operating systems such as Linux, IBM i5/OS, z/OS, UNIX and Windows.

FIGURE A

From the scheduling manager's user interface, you can create a process containing a mix of job types. In this example, the process begins when a file trigger occurs. The file trigger is followed by an i5/OS job, an FTP process, two UNIX jobs, and ends with another i5/OS job.

CROSS-PLATFORM INTEGRATION



A SINGLE POINT OF CONTROL You can use the drag-and-drop user interface to define and integrate workloads regardless of the processing platform. From a single view, you can define, monitor, and control workload as a logical business process rather than a series of unrelated processes and jobs on multiple platforms.

EVENT DRIVEN AUTOMATION Processes can be triggered by real business events (such as file arrival, entries in a database table or forms being completed on websites) across a broad range of systems and applications. The CA Workload Automation solution has more than 50 event triggers and job types.

CRITICAL PATH ANALYSIS With workload grouped according to business processes across the enterprise, the scheduling manager can automatically calculate due-times for an entire business process based on historical run-time averages. The critical path is displayed in the graphical flowchart with the estimated end time for each workload object. This visual framework provides you with the unique ability to identify and understand the business impact of a job within a job stream.

ALERT AND RESOLVE CA ESP WA System Agent technology enables real-time monitoring and alerts on the progress of enterprise-wide business process. Exceptions in processing can initiate automatic notification via email, pagers, problem management tickets, etc. Troubleshooting information can be retrieved and provided to staff to view, analyze and resolve the situation; thereby, minimizing the potential impact.

SIMULATION Workload definitions can be verified prior to production, ensuring viability of production runs. Application owners and others can see graphically how all parts of a business process fit together. They can drill down for more detailed information such as what parameters will be passed to a job based on any schedule criteria. This is a great asset in the application development lifecycle as it aids quality assurance by allowing users to validate their expected results before changes are applied.

SCHEDULE CRITERIA AND CALENDARING The scheduling manager has a built-in understanding of common scheduling terms and the flexibility to schedule workload based on any criteria you select (for example, specific date, defined interval, etc.) resulting in a smarter, more responsive scheduling tool. A user-defined calendar is only required to augment the dictionary of scheduling terms. In addition, a job can have many different run frequencies regardless of which business process it belongs to. As a result, even large scheduling environments may only require the default system calendar.

AUDIT SUPPORT TO MEET REGULATORY COMPLIANCE REQUIREMENTS Complete auditing of changes to the schedule is maintained to ensure that no unauthorized changes occur. The scheduling manager allows users to define access permissions at any level, and if there are problems, view what was changed by whom and when.

Key Capabilities

All CA Workload Automation agents share standard agent functionality to support event based automation. In addition to submitting jobs, these agents can detect information such as disk or CPU usage, the contents of a text file or the availability of other processes. This visibility allows you to include more job types as part of your business process.

This section highlights some of the key features that are unique to CA ESP WA System Agent for IBM i5/OS.

JOB SUBMISSION When you define an i5/OS job, you can run a program, run a program in a file, or run a command. You can pass positional parameters, specify environment settings, and pass keyword parameters. The user interface allows you to quickly navigate to the operating system to locate the executable that you want to run.

PASE ENVIRONMENT CA ESP WA System Agent for IBM i5/OS can run jobs in the PASE environment, allowing you to leverage existing AIX applications or scripts that you may need to run on your IBM i5/OS based system.

MSGW STATE JOBS CA ESP WA System Agent for IBM i5/OS provides the ability to view the response message and respond to jobs in a MSGW state directly from the user interface.

i5/OS SPOOL FILE SUPPORT From the user interface, you can retrieve i5/OS spool files to simplify monitoring and control of your workload.

FULL IFS AND QSYS FILESYSTEM SUPPORT CA ESP WA System Agent for IBM i5/OS provides full support of IFS and QSYS file systems, including text-file monitors and file triggers.

COMPLETE FTP FUNCTIONALITY CA ESP WA System Agent for IBM i5/OS can be configured as an FTP Client or Server with support for SSL encryption and compression. Users can monitor and track the status of file transfers directly from the user interface.

SUPPORT FOR JOB LDA CA ESP WA System Agent for IBM i5/OS can set up the LDA (Local Data Area) for a job prior to the job executing.

FULL RETURN CODE SUPPORT CA ESP WA System Agent for IBM i5/OS can be configured to return any of the three possible return values from a job. The severity ending code, the ILE return code or the OPM return code are all available.

Improved Management of IBM i5/OS Workload

CA ESP WA System Agent technology extends a common infrastructure layer to your IT environment. Data centers are no longer forced to operate in silos using platform specific scheduling tools and scripts. By standardizing on a CA Workload Automation solution and utilizing CA ESP WA System Agent technology, organizations can achieve cross-platform job scheduling and workload automation capabilities.

By leveraging the scheduling manager and CA ESP WA System Agent for IBM i5/OS, you can eliminate the cost and complexity associated with maintaining multiple operating and application scheduling products. From a single point of control, workload from different applications and platforms can be combined and monitored in the same process flow. With event-based sensors, dynamic critical path management, exception monitoring and alerting, IT can gain real time visibility into the health of your critical processes. In addition, by including the CA Workload Automation solution in the application development process, jobs and scripts can be defined once and deployed again as needed. Standardizing the scripting process provides developers with access to consistent and reliable builds, which facilitates more rapid deployment of applications with a lower setup cost.

CA ESP WA System Agent for IBM i5/OS improves the management of IBM i5/OS workload across the enterprise and allows you to better respond to the underlying needs of your business.

The CA Advantage

CA ESP Workload Automation System Agent for IBM i5/OS offers a unique opportunity for data centers with a mixture of IBM i5/OS and other operating platforms. Data centers can realize substantial costs savings, improve exception handling, incorporate granular event-based sensors, manage cross-platform dependencies, and achieve significant gains from simplified workload management.

CA ESP WA System Agent for IBM i5/OS is part of CA's unique vision for Enterprise IT Management, which helps you to unify IT and simplify the management of complex computing environments across your enterprise to secure IT and better manage risk, costs and service. The EITM vision is a dynamic, secure approach that integrates and automates the management of information technology applications, databases, networks, security, storage and systems across departments and disciplines to maximize the full potential of each.

Next Steps

Data centers worldwide have standardized on CA's Workload Automation solutions to simplify their complex IT infrastructures. See for yourself how CA ESP WA System Agent for IBM i5/OS can help you improve operational effectiveness and contain costs by executing workload across all leading operating systems from a single enterprise solution.

To learn more, and see how CA software solutions enable organizations to unify and simplify IT management for better business results, visit ca.com/products.