

# CA NetMaster® Network Management Keeps Your Network Up and Running

## Network and Voice Management

CA NetMaster®

CA eHealth®

CA Spectrum®

---

## Network and Voice Management

---

CA NetMaster® Network Management for TCP/IP

CA NetMaster® Network Management for SNA

CA NetMaster® Network Automation

CA NetSpy™ Network Performance

CA NetMaster® File Transfer Management

The CA NetMaster® Network Management r11.6 sp1 product suite provides you with a complete solution to address the challenges of your z/OS network management. Network service is improved through the use of proactive management and code-free automation techniques, and operational productivity is maximized through consolidated management and the use of web-based graphical interfaces. CA NetMaster Network Management is one of the product families that comprise the CA Network & Voice Management Capability Solution.

---

## Overview

As applications span platforms and servers, your network is the thread that links application components together. The functioning and responsiveness of your network is critical to application availability and performance. The CA NetMaster Network Management product suite is designed to support your needs for proactive mainframe network management.

---

## Benefits

The CA NetMaster Network Management product suite helps ensure that your business is supported by a robust, high-performing and available network. It gives technicians the tools and the automation capabilities that they need to plan and manage quickly and confidently. Your applications span network protocols, and your network management suite should present an integrated view of the business application. CA NetMaster Network Management provides you with this necessary integration.

---

## The CA Advantage

The CA NetMaster Network Management product suite is a fully integrated set of tools that gives you a holistic view of your environment. It presents all mainframe network data in one place and offers code-free automation, easy customization and a choice of interfaces to support the variety of users that need access to the data. This makes it an integral part of CA's Enterprise IT Management (EITM) vision, which is to help you unify IT and simplify the management of complex computing environments across your enterprise.

---

## CA NetMaster Network Management r11.6 sp1 Meets Business Needs for Network Availability and Performance

### Business Demand Responsiveness

In today's business world, we see an ever-increasing dependency on technology. The velocity of change is also increasing, and the underlying IT infrastructure must keep pace with business requirements. An on-demand infrastructure addresses the economic, business and technology challenges by effectively aligning IT with changing business priorities. The responsiveness of your enterprise network is critical to your company's competitive success.

Accordingly, a vital aspect of any business strategy is an IT department's ability to manage and deliver a reliable network infrastructure. In many cases, essential business and customer information continues to reside on the mainframe; therefore, reliable network access to the mainframe is critical for organizations, business partners and customers. At the same time, organizations are pressed to accomplish more with less while coping with increasing demands and shrinking resources. This necessitates a comprehensive management solution.

### Meeting Network Objectives

To address these challenges, CA provides the CA NetMaster Network Management product suite. This powerful suite addresses day-to-day network operations, availability and performance management requirements. It empowers organizations to proactively resolve problems with SNA and IP network access to mainframe-hosted applications, helping to ensure that service level goals are met and business objectives are aligned with network objectives. By optimizing and self-managing mainframe-connected networks, the CA NetMaster Network Management products increase IT responsiveness and customer satisfaction.

### CA Netmaster Network Management Product Family Suite

**CA NETMASTER NETWORK MANAGEMENT FOR TCP/IP** Supports reliable network access to IP-enabled mainframe applications through proactive management of network infrastructure, devices, events and connections. Includes support for native IP and Enterprise Extender (EE).

**CA NETMASTER NETWORK MANAGEMENT FOR SNA** Enables network operators to manage large SNA networks proactively through the collection of network information and monitoring of network devices.

**CA NETMASTER NETWORK AUTOMATION** Automates routine resource management tasks, SNA resources, and events from a desired-state perspective so that human error is minimized and ongoing changes are absorbed efficiently.

**CA NETSPY NETWORK PERFORMANCE** Measures and monitors end-to-end network performance and response times for SNA networks.

**CA NETMASTER FILE TRANSFER MANAGEMENT HELPS** enable organizations to improve the reliability of business-critical file transfers from a variety of file transfer products on multiple platforms.

---

## Key Capabilities

**PERFORMANCE MANAGEMENT** Effectively measures the performance of a network by gathering key performance metrics for a wide array of network resources. Supports the setting of alert thresholds to proactively highlight potential network performance degradation.

- **Real-time Performance Analysis** Collects detailed statistics for all monitored resources, including IP stacks, CSM, SNA and IP network devices, address spaces and other critical nodes.
- **Historical Performance Reporting** Features comprehensive network performance reporting on capacity, utilization and availability. Supports the scheduling of reports and the generation of reports on demand.
- **Response Time Monitoring** Supports the collection of response time information for network sessions and connections and alerting based on specified criteria.

**NETWORK PROBLEM IDENTIFICATION** Focuses on monitoring network health and increasing problem resolution efficiency. This includes the ability to detect and resolve session, connection and transfer problems, automate responses to network and transfer events, and log events for diagnostics and accountability.

- **Resource Monitor** Supports the display of all monitored resources, providing generic command support to simplify problem investigation.
- **Alert Monitor** Proactive alert monitor that highlights significant network events and supports the filtering and forwarding of events to other applications and platforms. Alerts are color-coded to represent their assigned severity (see Figure A).
- **IP Node Monitor** Identifies potential device problems by checking device status on a site-specified polling rate, monitoring device attributes and generating alerts based on requested thresholds.

**ADVANCED VISUALIZATION** Intuitive, web-based graphical user interfaces assist in reducing the learning curve associated with using mainframe management products. Personnel with limited mainframe or network knowledge can manage day-to-day operations with minimal training.

- **WebCenter** Supports Web browser-based access to all monitoring and diagnostic functions. Typical PC functions such as drop-down lists, navigation bars, and use of multiple windows are exploited to simplify operation.
- **ReportCenter** Supports Web browser-based access to historical performance data. ReportCenter assists in the timely availability and increased accessibility of network reports relevant to network personnel.

**SELF-MANAGEMENT** CA NetMaster Network Management reduces the amount of manual effort involved in customizing and defining network operational policy through self-management features. This is important in enabling a quicker return on investment and reducing the total cost of ownership associated with the product.

- **Network Discovery** Discovers network resources based on user-specified criteria and automatically defines these resources to the network knowledge base using predefined monitoring templates.

- **Network Baseline Monitoring** Implements enhanced network monitoring intelligence to identify normal network operation and usage patterns. Once the network baseline is established, thresholds can be defined to proactively alert when deviations occur.
- **Code-free Automation** Provides menu selections and fill-in templates to define when and how resources are monitored and managed. Desired state resource automation utilizes exception criteria, such as performance and utilization thresholds, to trigger automated actions.
- **Customizer** Simplifies setup through definition and updating of all customizable parameters using full-screen, field-validated menus.

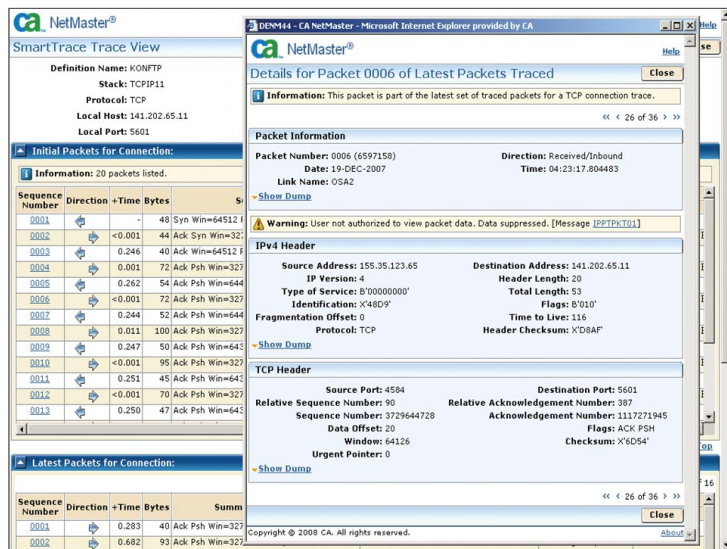
**INTEGRATED OPEN ARCHITECTURE** The CA NetMaster Network Management products can be readily integrated with other CA mainframe and distributed management products. This enables a more holistic view of an organization’s managed environment and supports the monitoring of resources across traditional department boundaries.

- **CA Network and Systems Management Integration** CA NSM NetMaster® Option supports the monitoring and control of mainframe-based network resources from the distributed CA Network and Systems Management platform.
- **Multisystem Support** All CA NetMaster Network Management-based management applications support seamless integration through both the 3270 and WebCenter user interfaces.
- **Open Integration** CA NetMaster Network Management supports integration with a multitude of management products through wide-ranging support for a variety of different protocols and interfaces, such as SNMP, LU6.2, PPI and systems console.

FIGURE A

Customized Packet Tracing Speeds Problem Resolution.

SMARTTRACE DYNAMIC PACKET TRACING



---

## What's New in r11.6

**IP CONDITION SUMMARY** The IP condition summary is a dashboard-like display that provides out-of-the-box monitoring and threshold alerting for key performance metrics. The IP condition summary also provides expert advice when exceptions occur.

**SMARTTRACE ENHANCEMENTS** SmartTrace now supports the following:

- Running and viewing IPCS trace analysis reports directly from active and saved traces
- Decoding of Telnet, FTP and HTTP conversations
- Searching for relevant data in traced packets through the new TAG command
- Setting an automated action when a trace ends to allow for user notification
- Reviewing the criteria used in the collection of a trace

**zIIP EXPLOITATION** Following on the zIIP enablement of the SSI in r11.5, much of the processing that occurs on the CA NetMaster NM for TCP/IP region is now zIIP-eligible. For organizations with this specialty engine, significant cost savings can be realized by allowing more CA NetMaster NM for TCP/IP processing to be offloaded onto the zIIP.

**IPv6 SUPPORT** All relevant product features, such as the IP Node Monitor and IP Connection lists, IP History, and ReportCenter now support IPv6. All relevant displays and input fields across the product now support IPv6 addresses. The Ping and Traceroute commands also support IPv6 addresses.

---

## What's New in r11.6 SP1 — Enterprise Extender Edition

The new release is called the Enterprise Extender (EE) Edition because it focuses on adding support for Enterprise Extender and APPN/HPR metrics, management and analysis.

**EE CONDITION SUMMARY** The IP Condition Summary has been enhanced to include EE metrics. This provides a status at-a-glance comparison of EE performance against a fixed set of EE exception indicators, making it possible to easily identify potential problems.

**EE SMARTTRACE TOOLSET** SmartTrace has been enhanced to provide centralized tracing for EE packets. Tracing can be initiated for a remote CP, UDP connection, RTP pipe, VIPA or UDP port.

**ENHANCED EE PERFORMANCE MONITORING** EE performance monitoring has been extended to include monitoring by partner CP, monitoring by local VIPA, retransmission rates and percentages, and EE traffic as a percentage of total output and input.

**RTP HEALTH CHECK** The RTP Health Check identifies HPR pipes in an abnormal condition.

**EE TRAFFIC EXPLORER** To identify overhead versus payload and to pinpoint performance issues with inefficient or slow EE connections, the EE Traffic Explorer provides a detailed breakdown of all components.

**EE CONNECTIVITY TEST** The EE Connectivity Test checks the EE infrastructure and network connections for an active EE connection or for an arbitrary IP host.

**RTP RED EVENT DETECTION** The RTPRED5M IP event detector detects when an RTP Pipe has ARB mode = RED (severe traffic congestion) for two consecutive five-minute samples.

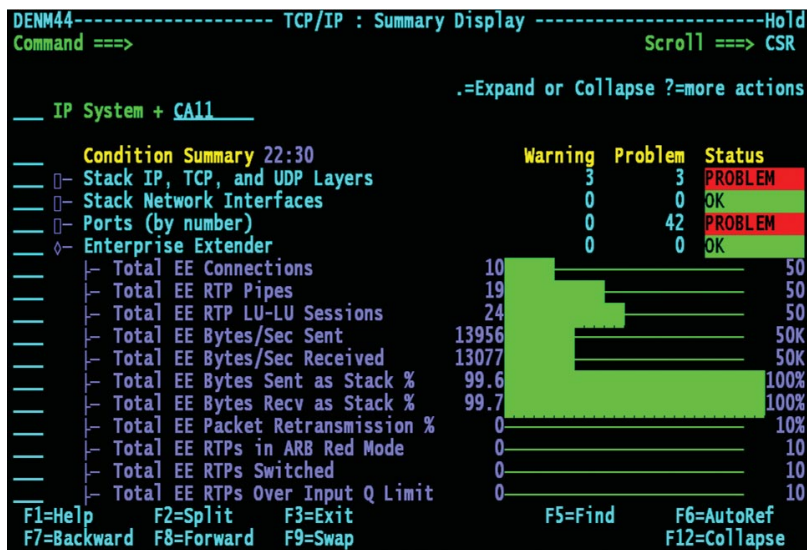
**APPN/HPR RESOURCE** An APPN/HPR resource class is provided to allow for the monitoring of RTP pipes and their associated status.

**VTAM COMMAND LIST** The VTAM Command List displays the commands relevant to EE, RTPs and APPN networking. It provides functions that are not available from line-mode VTAM SPO consoles, such as scrolling, find, command recall, and printing.

FIGURE B

All Network conditions visible on a single pane of glass.

CA NETMASTER NETWORK MANAGEMENT CONDITION SUMMARY



### Supported Environments

z/OS

---

## Move to Proactive Network Management to Gain Control Over Stringent SLAs

While many organizations have systems management well under control, a centralized and proactive network management solution has not been implemented. The CA NetMaster Network Management product family offers you the integrated solution that you need to automate the management of your network. Network management has become even more critical in the web-connected world, and the mainframe is an important part of this.

With CA's solution for Mainframe Network Management, your organization can:

**IMPROVE SLA COMPLIANCE** Managing to increasingly stringent requirements for availability and performance requires tools that proactively respond to changes in network demand and correct problems before user impact is felt. CA NetMaster Network Management keeps your critical business applications up and running efficiently.

**REDUCE NETWORK MANAGEMENT TCO** The cost of maintaining a mainframe network includes personnel expenses, training, support products and the price of errors. With readily deployable automation, errors are reduced, training is simplified and fewer people are needed to support a continually complex network.

**COMPLIANCE AND COMMUNICATION** Integrated reporting and the Web interface gives you the ability to meet network management compliance requirements, while making critical network information available to all stakeholders.

### CA NETMASTER NETWORK MANAGEMENT DELIVERS

---

PRODUCT	FUNCTION	FEATURES	BENEFITS
CA NetMaster Network Management	Integrated and automated mainframe network management and performance.	<ul style="list-style-type: none"><li>• Performance management</li><li>• Problem management</li><li>• Visualization and reporting</li><li>• Self management</li></ul>	<ul style="list-style-type: none"><li>• Real-time and historical performance reporting including response-time data</li><li>• Tools to facilitate early problem recognition and resolution</li><li>• Web-based reporting offering easy access to a wealth of network data</li><li>• Network discovery, baseline monitoring and code-free automation gives faster ROI</li><li>• Customizer individualizes the capabilities to the needs of the organization</li></ul>

---

---

## The CA Advantage

CA offers you the kind of comprehensive network management tools that your network administrators, operators and systems programmers need. With deep knowledge of mainframe networks and a clear understanding of the business challenges you face, CA designed the CA NetMaster Network Management product family to meet and exceed those requirements. These straightforward products allow you to reap immediate value from your investment. With easy set-up and customization, and the purpose-built design of the WebCenter, achieving measurable service level improvements with limited people resources is possible. The CA NetMaster Network Management family offers you a complete mainframe solution; integration with CA NSM takes it to the enterprise level.

CA NetMaster Network Management is an integral part of CA's Enterprise IT Management (EITM) initiative. The goal of EITM is to help you to unify IT and simplify the deployment, use and integration of all your management solutions, tasks and processes to help ensure that your business is fully supported.

---

## Next Steps

CA NetMaster Network Management provides you with the z/OS network management and performance capabilities that you need to help address your biggest challenges. These challenges include: supporting an increasingly complex network with a reduced staff, meeting stringent service levels and availability, and finding the proper tools to support a fully integrated mainframe network solution. CA NetMaster Network Management gives you the ability to achieve proactive and centralized network management, which means fewer and shorter outages, stable performance and improved business responsiveness.

---

To learn more, and see how CA software solutions enable organizations to unify IT and simplify the management of complex computing environments for better business results, visit [ca.com/mainframe/network](https://ca.com/mainframe/network).

CA (NASDAQ: CA), one of the world's leading independent, enterprise management software companies, unifies and simplifies complex information technology (IT) management across the enterprise for greater business results. With our Enterprise IT Management vision, solutions and expertise, we help customers effectively govern, manage and secure IT.

MP318191108

---

Learn more about how CA can help you transform your business at [ca.com](https://www.ca.com)

