

CA Mainframe Chorus From CA Technologies

In December 2010, CA Technologies announced delivery of a revolutionary role-based workspace innovation named CA Mainframe Chorus and its first major role: CA Mainframe Chorus for DB2 Database Management. CA Technologies has further developed the CA Mainframe Chorus platform to now include three roles—all less than 12 months after its initial launch. The platform features an enhanced workspace and rich visualization in addition to bringing knowledge management and collaboration to the roles of DB2 DBAs, security specialists, and storage managers. This makes it easier to manage more than one administrative area and provides common access to the management workspace.

The Dilemma of CIOs

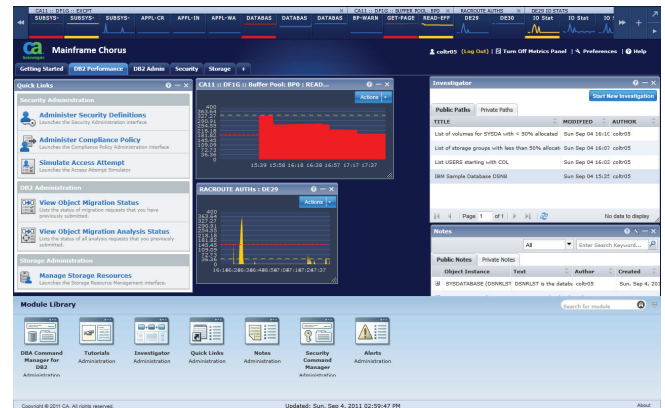
CIOs are facing several significant challenges to keep their vitally important mainframe computing assets performing at their best. The speed of correctly solving the problem is critical. If a mission-critical application or service isn't available, customers suffer, causing significant losses in revenue and customer goodwill. It's no secret that most mainframe professionals are specialists with 20 to 30 years of experience who will be retiring in the coming years. It can take years of experience and knowledge to quickly know where to look and what action to take. Experienced mainframe professionals have this knowledge, but those who need to eventually take over their responsibilities don't have the expertise. Getting less experienced Information Technology (IT) professionals up to speed quickly is also difficult due to the mainframe's text-based, command-oriented interface in contrast to one that's graphical.

Productivity is another issue. While experienced mainframe professionals possess significant knowledge, they must still regularly reference manuals, collaborate with others, and perform trial-and-error routines to find solutions to problems. If a problem recurs on an infrequent basis, there's no easy way to document the solution so it can be shared with others or quickly implemented the next time it occurs. Mainframe professionals also find themselves switching between multiple, disparate tools to perform their jobs, further zapping productivity.

It's a daunting task. Determining how best to leverage the expertise of the veteran mainframe professionals to transfer their knowledge to the less experienced IT professionals while also teaching them how to use command-level mainframe tools is a significant challenge. Combine that challenge with also having to increase productivity to keep costs low, and you get a sense of the difficulty involved. However, it's a challenge that must be resolved soon.

Next-Generation Mainframe Management

CA Mainframe Chorus addresses the need for easing the management of mainframe resources, provides a standard-



The CA Mainframe Chorus enhanced workspace provides multi-role-based capabilities for DB2 Database Management, Security and Compliance Management, and Storage Management.

ized method of knowledge transfer, and increases productivity through the use of its multi-role-based workspace. The unique interaction model of CA Mainframe Chorus delivers a new approach to managing mainframe computing environments for today's and tomorrow's information systems professionals by combining a visual workspace, collaboration, automation, and the ability to capture and easily share knowledge into a graphically rich, integrated solution organized around the job role of the person using it.

CA Mainframe Chorus provides the base platform upon which different role-based management components are built. The CA Mainframe Chorus platform combined with one or more role-based management components delivers a total solution to optimize performance, simplify management, and accelerate staff knowledge and experience. CA Mainframe Chorus roles are available for DB2 Database Management, Security and Compliance Management, and Storage Management. (Note: Additional roles will be introduced in the future.) Here's how it works.

Easing Mainframe Management

CA Mainframe Chorus presents mainframe resources in an intuitive, easy to learn and use graphical display known as the workspace. The enhanced workspace includes a metric panel, workspace tabs, and the module section (see graphic). The metric panel is located at the top and is a continuously running horizontal scroll displaying the status of various performance variables (known as Metric Icons) such as system, database, application performance, and many others. These performance variables dynamically change color based on thresholds to provide visual notice of various alert conditions. When the user clicks on a performance variable, more in-depth information is displayed in the workspace tabs area to present detailed data of what's taking place. Since CA Mainframe Chorus provides an integrated

CA Mainframe Chorus for DB2 Database Management From CA Technologies

solution, a mainframe professional can further drill-down into a problem through seamless interfaces to other products and take the appropriate corrective action.

Knowledge Transfer

Capturing the knowledge of experienced mainframe professionals and the actions they take to resolve issues has been a looming challenge for the past few years. Experienced mainframe professionals know what commands to enter to identify a problem, what actions to take to implement a solution, and a host of other information. How to capture the expertise of the experienced mainframe professionals and make it accessible to less experienced IT professionals for learning and using has been a quandary for many CIOs.

CA Mainframe Chorus provides the ability to capture and store information. Policies, procedures, actions, and solutions can be documented, readily available, sharable, and, in many cases, automatically performed. The result is a standardized method for knowledge transfer, more effective management of mainframes, and easier skill development for the next generation of mainframe professionals.

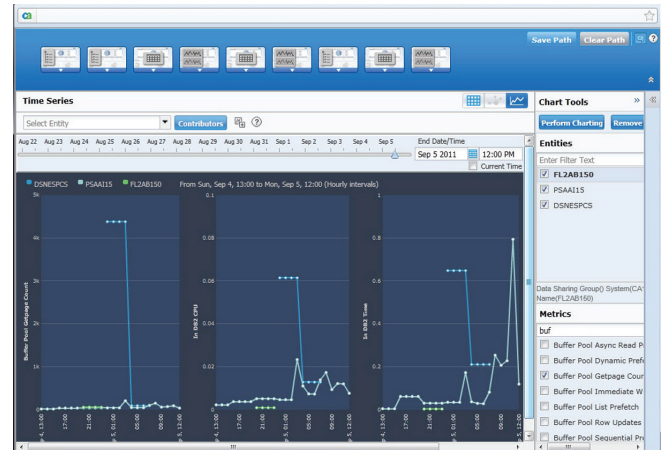
Greater Productivity

Being able to perform tasks quicker and easier is always nice. Effortlessly performing repetitive and monotonous tasks faster is awesome.

CA Mainframe Chorus increases productivity in several ways. Its intuitive interface makes performing a wide variety of mainframe management functions far easier, thereby improving productivity for both experienced and inexperienced mainframe professionals. Since the product is easy to learn how to use, inexperienced mainframe professionals can quickly be performing tasks that would otherwise take them months to learn and master. CA Mainframe Chorus can also automate the execution of commands, steps or other workflow, potentially accomplishing in minutes what might take a mainframe professional much more time to complete.

CA Mainframe Chorus for DB2 Database Management

A unique user experience is delivered by CA Mainframe Chorus for DB2 Database Management for z/OS Database Administrators (DBAs). The product helps streamline and automate repetitive DBA tasks, freeing time for more strategic projects. Complex DB2 for z/OS relationships can easily be visualized, thresholds and alerts can be proactively monitored, and performance bottlenecks can be quickly identified, diagnosed, and resolved to improve performance. Best of all, action steps to follow, documentation of actions taken, and other experiences can be easily accessed and shared to help accelerate knowledge and simplify mentoring for the next generation of DBAs. [ME](#)



Time series data graphing for DB2 applications performance data automates tracking and graphing of comparative historical data analysis for easier diagnosis and resolution of performance issues.

CA Mainframe Chorus for DB2 Database Management key features include:

- **Time series data graphing for DB2 application performance data:** Automate tracking and graphing of comparative historical data analysis for easier diagnosis and resolution of performance issues
- **Object Tree navigation and management of DB2 objects:** Improve productivity and visualization when navigating LPARs, subsystems, databases and other DB2 objects
- **Alerts on DB2 threshold exceptions that provide a launch point for easier troubleshooting:** Focus DBAs on priority Service Level Agreement (SLA) items and enable new DBAs to learn these skills
- **In-context domain documentation with third-party integration:** Increase productivity of both current and next-generation mainframe IT staff through centralized, in-context knowledge
- **Near real-time performance monitoring with graphical displays:** Manage the health of the DB2 system as well as currently executing applications.

See a Demo - Read a White Paper - Get More Information

You can learn more about CA Mainframe Chorus for DB2 Management by visiting www.ca.com/chorus.

CA Mainframe Chorus and CA Mainframe Chorus for DB2 Database Management are available from CA Technologies, One CA Plaza, Islandia, NY 11749. Voice: 800-225-5224; Website: www.ca.com.

CA Mainframe Chorus for Security and Compliance Management From CA Technologies

CA Mainframe Chorus is a role-based workspace designed to make it easier for IT staff—regardless of experience or background—to manage the mainframe more effectively.

Today, the CA Mainframe Chorus platform includes a total of three roles. In addition to the DB2 for z/OS management role included with the first release of CA Mainframe Chorus, the new release extends its innovative management paradigm with two new roles—CA Mainframe Chorus for Security and Compliance Management and CA Mainframe Chorus for Storage Management.

This unified approach makes it easier to manage more than one administrative area and provides common access to the management workspace, in addition to bringing knowledge management and collaboration to the roles of DB2 DBAs, security administrators, and storage managers.

Here we will review the CA Mainframe Chorus for Security and Compliance Management.

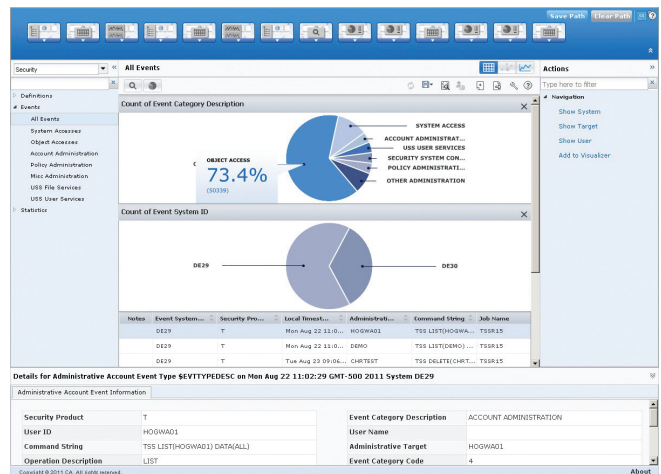
Practical Use Scenario

Everyone knows security is critical to a business' success; a reliable, fast, cost-effective security infrastructure is needed. The problem is that many data centers continue to rely on manual processes and “after-the-fact” reporting that can take up to 24 hours to produce after an event has occurred.

CA Mainframe Chorus for Security and Compliance Management reduces the amount of time, experience, and effort required to monitor and report on security and compliance. Through real-time notification of potential security breaches, stakeholders can receive immediate notification of pertinent violations, access, or change activity to critical resources, providing the means for faster remediation. Access to audit and compliance information not available in standard security reports is easily generated, permitting less-skilled security analysts to produce customizable, business-centric reports. The result is the ability to move from a reactive to a proactive security approach, which is the key to reducing the cost and complexity of managing security activities and reporting.

CA Mainframe Chorus for Security and Compliance Management

CA Mainframe Chorus for Security and Compliance Management is a new role that helps security specialists simplify and streamline security and compliance administration. The key features include:



Working with complete, current, and accurate security state and event information allows security analysts to respond more quickly to potential issues affecting end-users or system performance.

- **Real-time access to state and event information:** Helps ensure security administrators are working with complete, current, and accurate security information, enabling quick identification of and response to security issues
- **Security data model extension:** Flexibility to add security element descriptors, enabling security analysts to produce business-centric reports that are easier to understand by data owners and end users
- **New and improved event handling for z/OS:** Assists organizations in achieving and continuously maintaining compliance with government and industry regulations, providing real-time notification for faster remediation
- **Advanced reporting capabilities:** Enables security analysts to better understand their security policies and the context around security events, as well as more quickly respond to requests for custom reports.

**See a Demo - Read a White Paper
Get More Information**

You can learn more about CA Mainframe Chorus for Security and Compliance Management by visiting www.ca.com/chorus

CA Mainframe Chorus and CA Mainframe Chorus for Security and Compliance Management are available from CA Technologies, One CA Plaza, Islandia, NY 11749. Voice: 800-225-5224; Website: www.ca.com.

CA Mainframe Chorus for Storage Management From CA Technologies

CA Mainframe Chorus is designed to make it easier for IT staff—regardless of experience or background—to manage the mainframe more effectively. The product makes managing multiple administrator roles easier by providing common access to the management workspace, storing solutions from others in a knowledge management area where they can be shared, and incorporating collaboration to more quickly gain help from others for the roles of DB2 DBAs, security administrators, and storage managers.

Today, the CA Mainframe Chorus platform includes a total of three roles. In addition to the DB2 for z/OS management role included with the first release of CA Mainframe Chorus, the new release extends its innovative management paradigm with two new roles—CA Mainframe Chorus for Security and Compliance Management and CA Mainframe Chorus for Storage Management.

Here we will review the CA Mainframe Chorus for Storage Management. CA Mainframe Chorus for Storage Management is a new role that features proactive monitoring of storage resources with at-a-glance views that enable efficient management of the DASD and tape environment, helping novice storage managers to get up to speed fast.

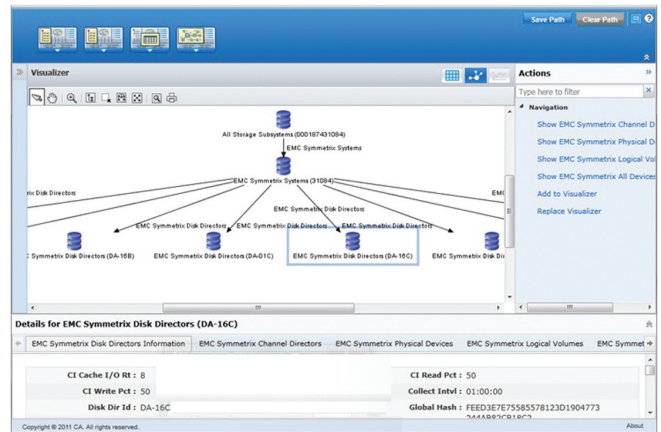
Practical Use Scenario

Originally, “storage management” simply meant the allocation and provisioning of DASD when needed. Today, storage managers spend considerable time and effort managing tape and DASD across multiple vendors, systems, and locations. They must ensure that no production failures occur due to lack of available or idle storage, often relying on manual processes to view, monitor, and analyze storage resources.

CA Chorus for Storage Management helps reduce the amount of time, experience, and effort required to manage storage resources. It provides storage managers with a complete, consolidated topology view of their storage assets, proactive monitoring of utilization levels, and object detail drill-down. The product takes a vendor-neutral approach to help optimize heterogeneous storage infrastructures while displaying processing and data trends, providing quick insights into storage issues.

CA Mainframe Chorus for Storage Management

CA Mainframe Chorus for Storage Management key features include:



The topology Visualizer helps novice and experienced storage managers to more easily and quickly view the entire storage infrastructure and drill down into the details.

- **Pre-defined monitors and alerts:** Saves time and mitigates risks by having easily changeable, pre-set monitoring and alerts for immediate, automated monitoring of storage levels.
- **Solution-based storage analysis:** In-depth, qualitative analysis reporting capabilities deliver extensive information in less time to improve storage infrastructure reporting accuracy.
- **Storage topology views:** Enables novice and experienced storage managers to easily and quickly view the entire storage infrastructure through a topology map displaying the logical relationships between resources related to a selected resource such as hosts, host volumes, storage systems, storage volumes, storage pools, and disk drives.
- **Historical storage trend analysis:** Automates the tracking and graphing of comparative historical analysis of storage volume data for easier diagnosis and resolution of performance issues.

**See a Demo - Read a White Paper
Get More Information**

You can learn more about CA Mainframe Chorus for Storage Management by visiting www.ca.com/chorus.

CA Mainframe Chorus and CA Mainframe Chorus for Storage Management are available from CA Technologies, One CA Plaza, Islandia, NY 11749. Voice: 800-225-5224; Website: www.ca.com.