

PRODUCT SHEET
CA SymDump Batch

CA SymDump® Batch Version 9.0



CA SymDump® Batch provides comprehensive diagnostic information for application program failures in both test and production batch processing environments, enabling you to more effectively reduce application downtime.

Overview

Maintaining application integrity in an age where outages and performance issues often lead to frustrated customers, lost revenue and unforeseen costs is more difficult than ever before. CA SymDump Batch provides helpful, easy-to-understand abend reports, as well as support for batch applications that utilize IBM DB2 for z/OS, IBM IMS for z/OS, or CA IDMS™/DB, providing you with the information you need to minimize application downtime and improve quality.

Business value

Building quality into your mainframe business applications through effective fault analysis helps you ensure that your applications meet established service levels. By intercepting such faults as abends, CA SymDump Batch helps you promptly and efficiently resolve issues, shortening development cycles, increasing application quality and helping you maximize the return on your mainframe investment.

Features

Mainframe 2.0

CA SymDump Batch has adopted key Mainframe 2.0 features designed to simplify your use of CA SymDump Batch and enable your staff to install, configure and maintain it more effectively and quickly.

- **CA Mainframe Software Manager™:** CA Mainframe Software Manager (CA MSM) automates CA SymDump Batch installation and maintenance and removes SMP/E complexities.
 - **The Product Acquisition Service** enables you to more easily move product installation packages and maintenance from CA Support Online directly to your mainframe environment and prepare them for installation.
 - **The Software Installation Service** standardizes CA SymDump Batch installation, which includes a new, streamlined Electronic Software Delivery (ESD) method that allows CA SymDump Batch to be installed using standard utilities. This service also provides standardized SMP/E product installation and maintenance via APARs and PTFs, and simplifies SMP/E processing through an intuitive graphical user interface and an intelligent Installation Wizard.
 - **The Software Deployment Service** enables you to more easily deploy CA SymDump Batch in your mainframe environment.
- **Installation Verification Program (IVP) and Execution Verification Program (EVP):** As part of qualification for inclusion in the set of CA Technologies mainframe products released every May, CA SymDump Batch has passed stringent tests performed through the IVP and EVP to find and resolve interoperability problems prior to release. These programs are an extension of our ongoing interoperability certification initiative launched in May 2009.
- **Best Practices Guide:** This Guide provides information on CA SymDump Batch installation, initial configuration and deployment to shorten the learning curve for staff who are responsible for the installation and management of this product.
- **Health Checker:** The Mainframe 2.0 Health Checker provides CA SymDump Batch Health Checks that execute under the IBM Health Checker for z/OS. The Health Check helps make sure that systems programmers have access to the critical diagnostic information needed to identify and resolve system and critical application failures. This capability simplifies problem diagnosis, shortens testing time and effort, and reduces the likelihood of costly downtime.

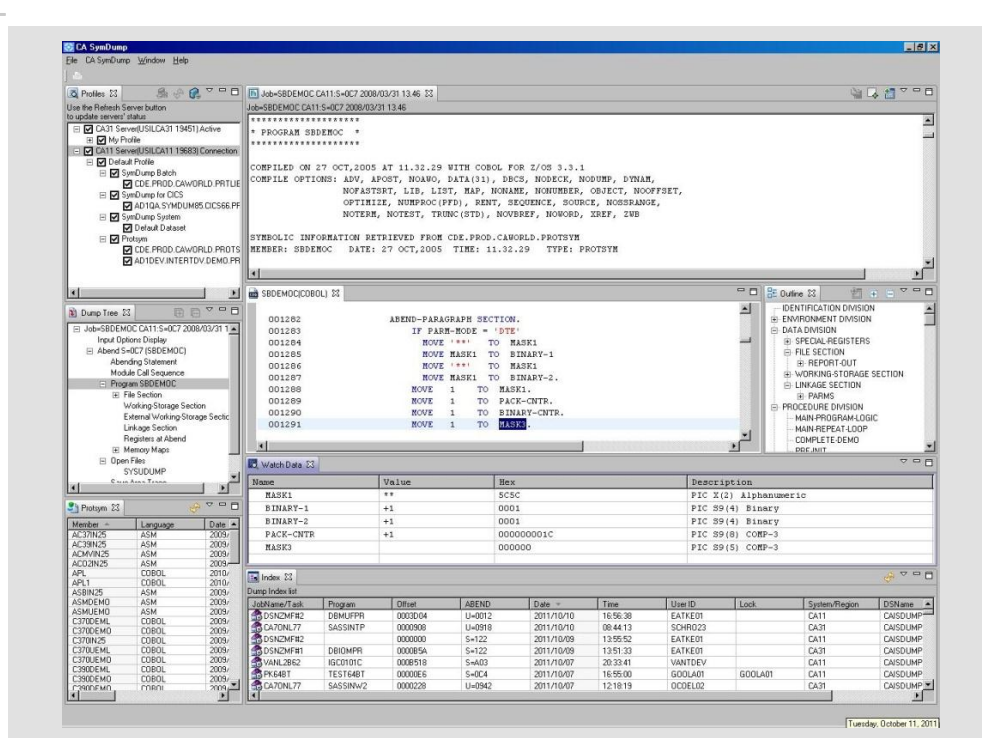
What's new in CA SymDump Batch Version 9.0

New Graphical User Interface Based on Eclipse: CA SymDump Batch now includes a graphical user interface that provides a common look and feel and consistent functionality where applicable across all CA SymDump products. This graphical user interface includes:

- A plug-in deliverable for Eclipse users and a Rich Client Platform (RCP) deliverable for non-Eclipse users. Both are CA MSM compatible to facilitate installation and upgrades.
- Support for IBM Rational Developer for System z® (RDz) to help provide seamless integration between the CA SymDump graphical user interface and the RDz integrated development environment.
- Specialty views that expedite the fault analysis and resolution process, including fault repository views, source and data views and analysis views.
- User-customizable views and perspectives and user-defined profiles that help you maximize your effectiveness.
- Value-add features such as the Watch View, which helps you to more quickly examine data fields and assess their role in, and relationship to, the problem.
- Incorporated product-use guidelines including basic help with contents and index search, dynamic help and cheat sheets. This facilitates interactive training, decreases the learning curve, increases adoption rate, and helps you become more effective quickly.

FIGURE A.
New CA SymDump Batch Graphical User Interface

The new CA SymDump graphical user interface helps both the new and experienced mainframe programmer more easily analyze and resolve batch, CICS and system faults.



Other key features

CA SymDump Batch provides:

- **Symbolic support:** CA SymDump Batch identifies the COBOL, PL/1 and Assembler source statement in error and merges data definitions with program storage, helping you quickly zero in on the problem, identify their values at the time of the abend and map operands back to their originating data items. Symbolic support is available for all COBOL, PL/1 and Assembler programs in the abending application, not just the most active one. Moreover, this support is available without any compile-time preprocessing, run-time overhead or program reruns.
- **Helpful diagnostic analysis:** Concise, easy-to-read reports help you understand why the abend occurred and suggest strategies for resolving the problem. In addition to the actual source statement on which the abend occurred, these reports identify such important information as the abend code and module name, the abending instruction and the values of its operands, relevant addresses, calling sequence, the contents of the registers at the abend and the current logical record of each open file. If requested, reports can also identify data management control blocks for each file.
- **Database and file information:** CA SymDump Batch provides abend reports for any abend that occurs in an IBM DB2 for z/OS, IBM IMS or CA IDMS/DB application, with detailed database information that helps you identify the problem.
- **IBM DB2 for z/OS application reports:** Identify database information, including:
 - IBM DB2 for z/OS version, subsystem ID and connecting information
 - The plan name, bind date and time and bind options
 - Last or abending SQL statement, its location, SQL return code and associated host variables
- **IBM IMS/DB and IMS/DC application reports:** Identify database information, including:
 - IMS release
 - The name, location and status of each Process Control Block (PCB)
 - Current or last segment, SSA and parameters for last call
- **CA IDMS/DB application reports:** Identify database information, including:
 - CA IDMS/DB release, genlevel, DBNODE, DBNAME, DICTNODE and DICTNAME information, SYSIDMS parameters and subschema name, compile date and structure type

- Currencies for all areas, records and sets in the subschema at the time of the abend
 - Current and previous bind buffer address and size for each record accessed in the subschema
 - **Key integration:** CA SymDump Batch provides powerful integration with key testing tools to simplify the diagnosis process.
 - **CA File Master® Plus:** Launch CA File Master Plus to view any data set from the CA SymDump Batch Repository Viewer. This feature enables you to initiate a Browse or Edit session with selection criteria directly from CA SymDump Batch while viewing an abend report.
 - **CA Endeavor® Software Change Manager (CA Endeavor SCM) – Dynamic Symbolic Support:** CA SymDump Batch provides symbolic support dynamically for CA Endeavor SCM, enabling you to take advantage of the CA Endeavor SCM Footprint feature to dynamically locate and format symbolic information automatically on demand, eliminating any program-level setup requirements for symbolic support.
-

Delivery approach

CA Services provides a portfolio of mainframe services delivered through our internal staff and a network of established partners chosen to help you achieve a successful deployment and get the desired business results as quickly as possible. Our standard service offerings are designed to speed deployment and accelerate the learning curve for your staff. CA Technologies field-proven mainframe best practices and training help you lower risk, improve use/adoption and ultimately align the product configuration to your business requirements.

Benefits

As you strive to meet increasing service-level objectives, maintaining application quality and integrity is more important today than ever before. To meet these objectives and minimize downtime, you need solutions that enable quick and efficient identification and resolution of application faults. CA SymDump Batch can help you:

- Resolve issues promptly, shorten development cycles and improve application quality through easy-to-understand reports that enable you to quickly pinpoint and address problems.

- Maximize the return on your mainframe investment through intelligent support for such enterprise mainframe databases as DB2, IMS and CA IMDS/DB.
- Integrate your application fault management processes and solutions with software change management, as well as file and data management, fostering a more comprehensive and streamlined approach throughout your application lifecycle.

CA SymDump Batch helps you to efficiently identify and resolve application program failures in both test and production batch processing environments. During testing, concise reports help you diagnose abnormally terminating batch applications. Once applications reach production, CA SymDump Batch intercepts abends, producing high-quality reports that facilitate root-cause diagnosis.

The CA Technologies advantage

CA Technologies has 30 years of recognized expertise in robust, reliable, scalable, and secure enterprise-class IT management software. CA SymDump Batch is a key component of the Mainframe 2.0 initiative from CA Technologies to change the way the mainframe is managed forever by helping you maximize the value of CA Technologies mainframe products and by providing a simplified experience and innovative solutions that deliver value quickly and flexibly.