

# CA Workload Automation Advanced Integration for SAP® Business Warehouse



## At a Glance

CA Technologies integrates CA Workload Automation AE with SAP® Business Warehouse enabling customers to automate and manage business processes in SAP Business Warehouse (SAP BW) from a single interface. An SAP system landscape may include a large number of installed SAP and non-SAP systems, and a typical SAP BW process chain will include jobs that run on different systems. CA Workload Automation Advanced Integration for SAP BW allows SAP BW users to add CA Workload Automation AE jobs in their SAP BW process chains, eliminating the need to breakup existing or create segmented process chains, while maintaining a comprehensive process view. Additionally, this allows SAP users to better visualize and manage their complex, end-to-end business process chains with CA Workload Automation AE from within their familiar SAP Business Warehouse environment.

### Key Benefits/Results

- **Extend** scheduling capabilities of SAP BW to integrate non-SAP functionality in SAP BW process chains.
- **Visualize** end-to-end workflows, monitor statuses and manage dependencies between SAP BW and CA Workload Automation AE jobs from one central location.
- **Enable** SAP BW teams to self-manage CA Workload Automation AE integration using CA Workload Automation AE's security features.
- **Reduce** the cost and complexity of managing mission-critical SAP and non-SAP jobs.

### Key Features

- Add new and existing CA Workload Automation AE jobs to an SAP BW process chain without having to leave SAP BW.
- Obtain details of job execution from within SAP Business Warehouse. Users can monitor CA Workload Automation AE jobs in SAP business process context.
- Execute and monitor statuses of external jobs.
- Set CA Workload Automation AE global variables.
- Display and define most frequently used jobs.
- Define and display database jobs.

## Business Challenges

**Limited ability to visualize, monitor and run process chains.** A typical end-to-end business workflow may have a combination of SAP BW jobs and CA Workload Automation AE jobs. However, SAP BW users currently have to run their SAP BW jobs in a process chain separately from the CA Workload Automation AE jobs, limiting their ability to manage or visualize all jobs from one location.

**Limited ability to manage time dependent, parallel jobs.** SAP BW users have limited ability to auto-trigger CA Workload Automation AE jobs which may be dependent on a specific job in the SAP BW process chain. They currently have to toggle between SAP BW and CA Workload Automation AE to manage CA Workload Automation AE jobs that may be part of the overall workflow. This decreases the ability to manage parallel jobs and increases time and cost in completing process chains.

**Additional effort associated with training users on multiple scheduling engines.** The look and feel of SAP BW is different from that in CA Workload Automation AE, and since workflows may require jobs to be scheduled and run from both products, companies might end up with different teams, increasing costs around training and an overall reduced responsiveness to the business. SAP BW users would require training in CA Workload Automation AE in order to leverage all the features present in CA Workload Automation AE.

## Solution Overview

CA Workload Automation AE for SAP BW provides integration between CA Workload Automation AE and SAP BW. This enables SAP BW users to monitor and manage jobs that are scheduled and executed by CA Workload Automation AE from within the SAP BW interface.

Some of the key advantages of the solution include:

**Extended scheduling capabilities of SAP BW.** By integrating CA Workload Automation AE with SAP BW, users can leverage CA Workload Automation AE's ability to support an extensive range of third-party applications such as enterprise databases. SAP BW users can integrate disparate jobs defined in CA Workload Automation AE into unified process chains.

**Intuitive, powerful SAP BW UI enhancements.** The SAP BW interface has been enhanced to offer CA Workload Automation AE related options to the SAP BW user. Through these enhancements, SAP BW users can drag and drop the CA Workload Automation AE jobs they

wish to manage, into the SAP BW process chain. This will give them the capability to monitor status of CA Workload Automation AE jobs, manage dependencies, visualize the overall process chain from one central location and execute parallel CA Workload Automation AE jobs in a way they could not previously.

**Reduce cost and effort.** SAP users have the ability to leverage CA Workload Automation AE jobs through the SAP BW interface that is familiar to them. This results in lower training costs. Further, by removing the need to toggle between CA Workload Automation AE and SAP BW to manage dependencies, productivity is dramatically increased which reduces the effort and cost of managing end-to-end workflows.

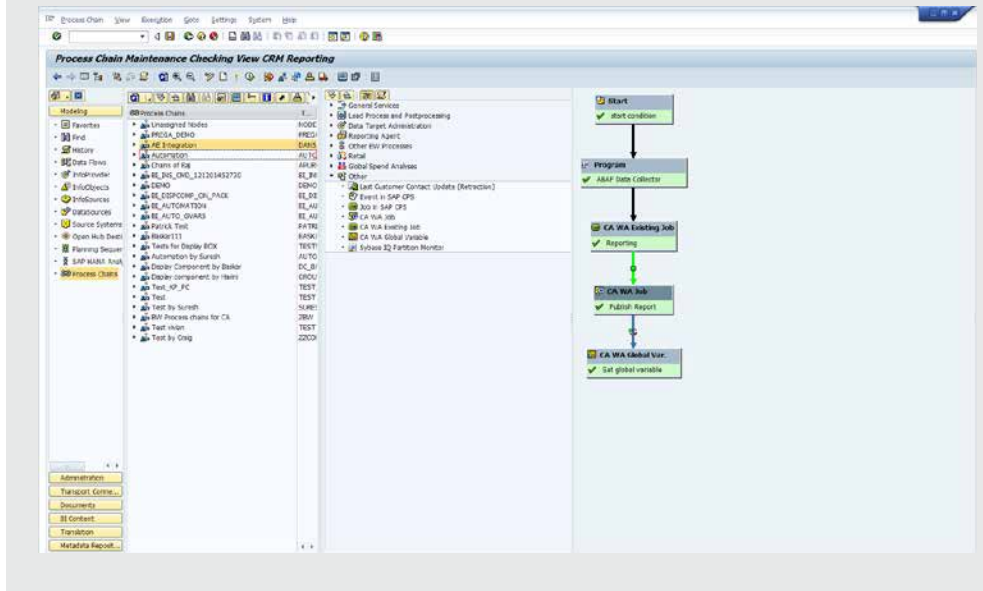
**Improved ability to manage business processes.** By integrating CA Workload Automation AE with SAP BW, business processes typically managed by separate groups can now be managed from within the same application, increasing visibility across the organization and enabling better alignment between IT and business processes.

### Critical Differentiators

- Provides extensive application support.** This allows IT to extend capabilities for automated management of business application workloads such as Informatica, SQL Server, PeopleSoft, Oracle E-Business and other business applications, resulting in lower operating costs and increased cross-enterprise visibility.
- Offers high scalability.** The integration with CA Workload Automation AE allows SAP BW to leverage production scalability

For more information, please visit [ca.com/wla](http://ca.com/wla)

CA Workload Automation AE Advanced Integration for SAP® Business Warehouse provides business users with an easy way to schedule, manage and automate SAP jobs, as well as non-SAP jobs, from within SAP Business Warehouse.



which is best-of-breed in the industry. This scalability is obtained without running multiple instances, which is atypical compared to other scheduling engines.

- Built-in fault tolerance and recovery.** CA Workload Automation AE provides reliable, lights-out operations with intelligent, automated recovery. This facilitates availability of business systems by enabling jobs to be completed accurately and on time.
- Self-service.** This gives end users the ability to request and execute workload processing controlled by workload policy and governance processes. This helps provide higher levels of efficiency and control, while giving the business more control over their own services.

### Related Products/Solutions

CA Workload Automation AE for SAP BW is part of the CA Workload Automation solution, which provides event-driven automation, policy-based management, workload monitoring and reporting capabilities for distributed and z Systems environments through **CA Workload Automation AE (formerly AutoSys).**

**CA Workload Automation Agents** enable organizations to automate workloads across multiple services and business applications including SAP, PeopleSoft, Oracle E-Business and Micro Focus.

**CA Workload Automation Advanced Integration for SAP Solution Manager** provides enables CA Workload Automation AE customers to manage and monitor jobs from within SAP’s Solution Manger Job Scheduling Management solution.

CA Technologies (NASDAQ: CA) creates software that fuels transformation for companies and enables them to seize the opportunities of the application economy. Software is at the heart of every business, in every industry. From planning to development to management and security, CA is working with companies worldwide to change the way we live, transact and communicate – across mobile, private and public cloud, distributed and mainframe environments. Learn more at [ca.com](http://ca.com).