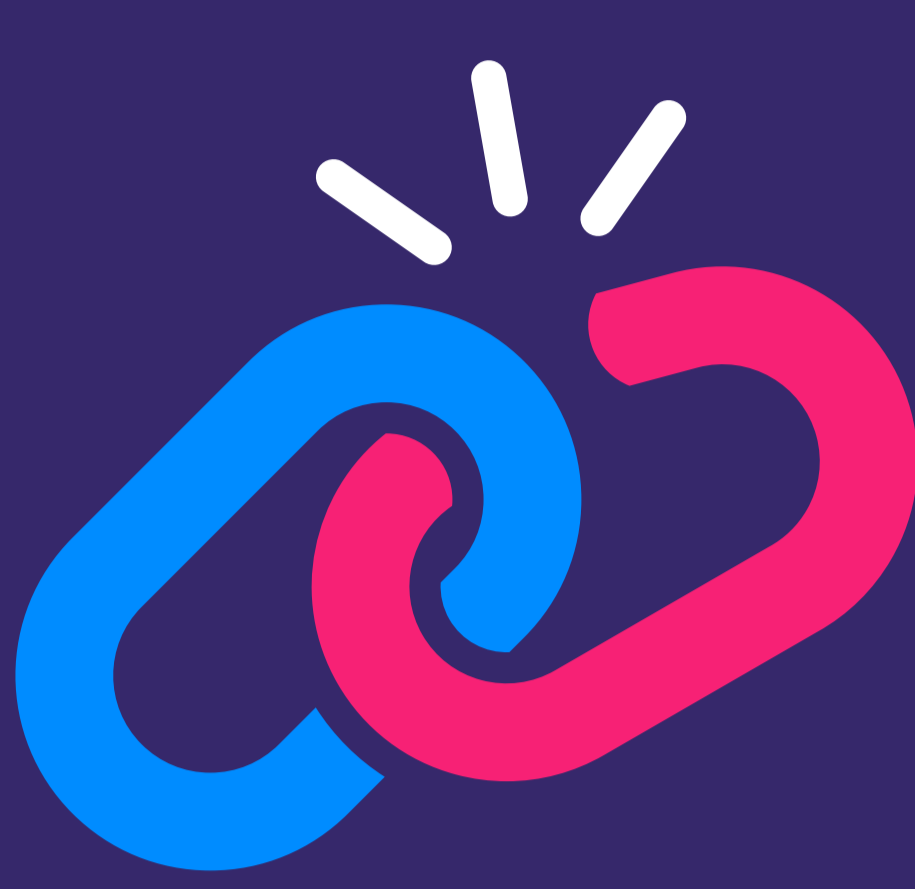


Agility demands connectivity

Modern businesses are—
by necessity—becoming more agile.

As planning and delivery cycles speed up, it's exposing a critical disconnect between the way work is planned from top down and the way work is executed from the bottom up. As organizations adopt more agile ways of working, their tools need to evolve to ensure the entire business is connected and aligned to the same outcomes. Agile isn't just about delivering faster; it's about delivering more value.

The cost of misalignment



80%

Up to 80 percent of products lose money¹

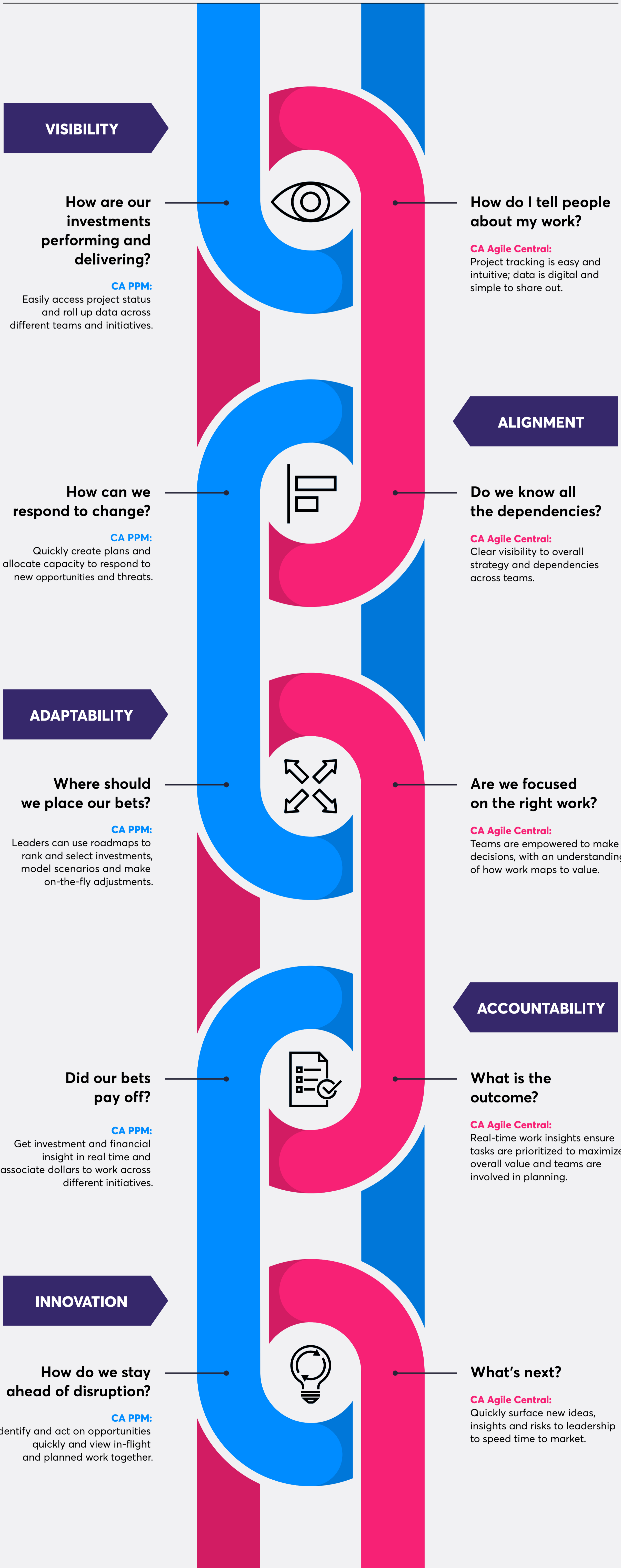
The implication isn't just that companies aren't working efficiently, it's that they are not building the things that matter most.

CA PPM and CA Agile Central unite industry leading project portfolio management with best in class agile management tools.

They enable you to manage your investments and your work on a single, unified platform, putting your whole organization on the same page when it comes to data, insights and prioritization of work. When teams can see how their work aligns to broader goals and leaders can see how work maps to the strategic initiatives, then the whole organization can shift its focus from getting work done to doing the right work.

CA PPM
Strategic Investment Planning

CA Agile Central
Agile Work Orchestration



See what's possible when you put your whole organization on the same page

CA PPM + CA Agile Central work together to create transparency and seamless collaboration at every level of your organization, connecting strategy, planning, execution and measurement on one unified platform. When everyone can align around a shared understanding of the work, insights flow in both directions, helping you make the decisions that drive business outcomes and deliver more value to your customers.

Connect your organization; deliver more value.
Download the eBook to learn more.